



AUSTRALIAN
OWNED & OPERATED



CATALOGUE



We've got you covered

AUSSIE ROOFING WAREHOUSE

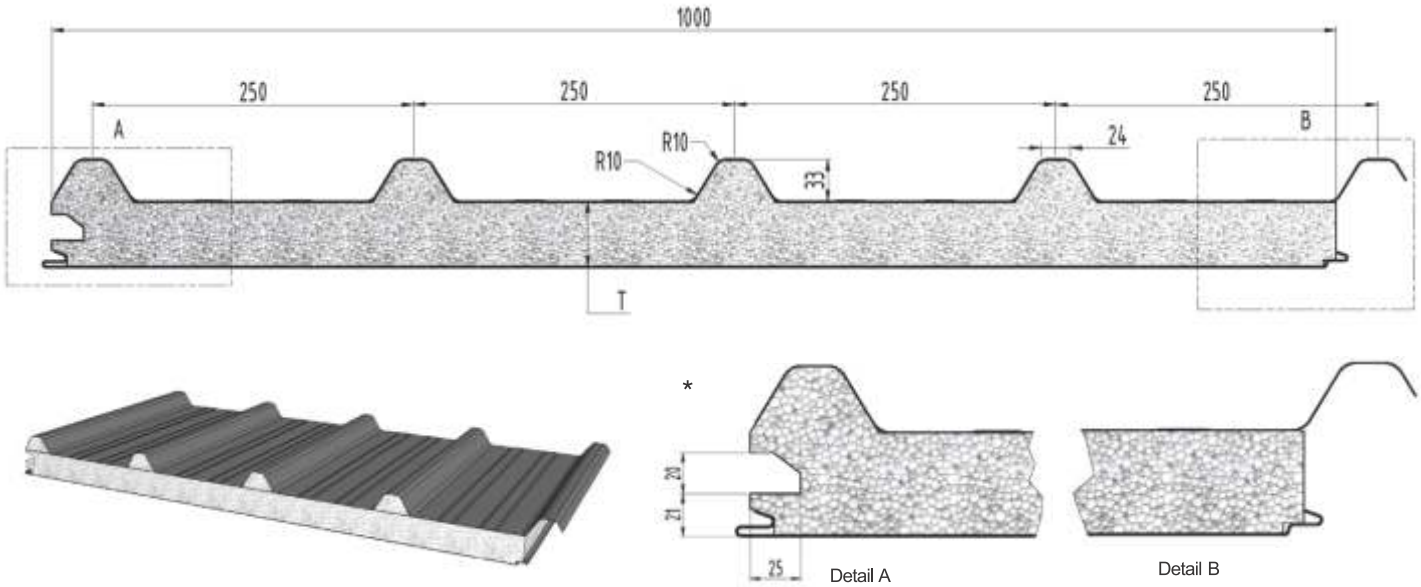


ALL YOUR HOME IMPROVEMENT REQUIREMENTS

CALL 0426 968 086 FOR A FREE QUOTE

 aussieroofing@yahoo.com

 www.aussieroofingwarehouse.com.au



* Conduit receiver track optional addition

Insulated Trim-EPS-FR is an Insulated Roof Panel System, comprising of two pre-painted, roll-formed steel skins, with a fire retardant grade expanded polystyrene insulating core.

The top profile offers striking looks with all of the benefits of modern Insulated Panel technologies.

The bottom skin has a roll-formed tongue and groove edge.

Recommendations

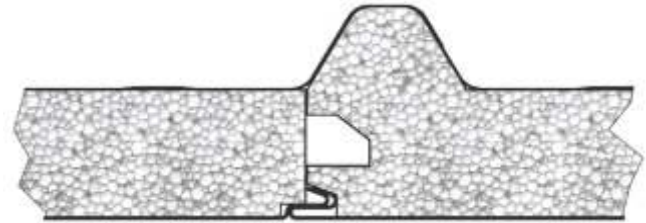
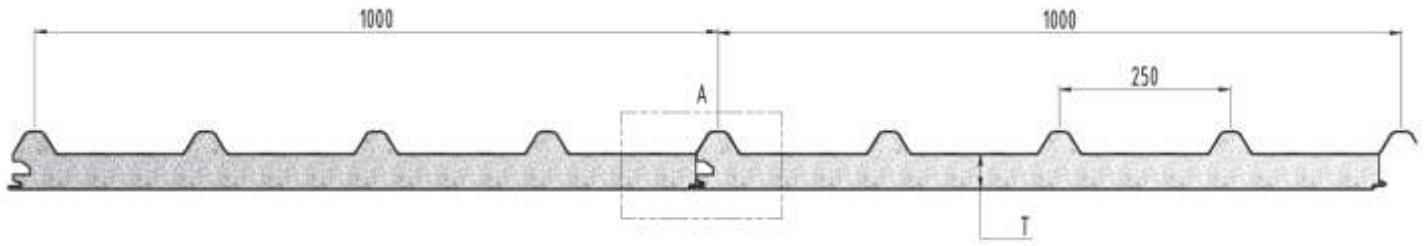
- Patios
- Pergolas
- Carports
- Portable Buildings
- Home Extensions
- Commercial Buildings
- Residential Buildings
- Wineries
- Spray Booths

Profiles Available (Underside Skin)

- Smooth
- Ribbed
- SatinLine
- Mesa

Single Spans (mm)					
Wind Category	Panel Thickness	3 Sides Open	2 Sides Open	1 Side Open	Fully Enclosed
N2 (W33)	50	5400	5000	4500	4300
	75	6500	5500	5000	4700
	100	7200	6200	5700	5500
N3 (W41)	50	4800	3800	3300	3000
	75	5500	4300	3900	3700
	100	6200	5000	4500	4300
N4 (W50)	50	4000	3300	3000	3000
	75	4600	3600	3400	3300
	100	5300	4100	3800	3500

Steel Skin Details	Top Skin	0.42mm / G550 AZ150
	Bottom Skin	0.60mm / G300 Z275
Max. Skin Temperature	78°C Dry Heat	
Core Material Details	SL Grade Polystyrene - Fire Retardant Grade	
Thermal Conductivity AS 1366.2/ASTM C 518	0.037 W/mK @22.5°C	
Adhesive	Thermosetting two-part adhesive	
Core Density	13.5kg/m ³	
Weight (kg/m²)	50mm Panel	10.58
	75mm panel	10.94
	100mm Panel	11.17
	125mm Panel	11.80
	150mm Panel	12.23
	175mm Panel	12.76
R Value @ 22.5°C	200mm Panel	13.29
	50mm Panel	1.4
	75mm panel	2.1
	100mm Panel	2.7
Sheet Coverage	125mm Panel	3.4
	150mm Panel	4.1
	175mm Panel	4.7
	200mm Panel	5.4
Sheet Coverage	1000mm	
Length (mm)	Cut to Length Min of 1800mm	
Length Tolerance (mm)	5mm+/-	
Thickness (mm)	50, 75, 100, 125, 150, 175, 200	
Minimum Roof Pitch	2°	



Detail A

Early Fire Hazard Properties AS 1530-1999

AWTA Test Report 18-006076 14-11-2018

Index	Test Range	External Top Skin
Ignitability	0-20	0
Spread of Flame	0-10	0
Heat Evolved	0-10	0
Smoke Developed	0-10	2

Insulated Trim-EPS-FR Acoustic Testing has been performed in compliance with the requirements of AS 1191-2002 "Acoustics - Method for Laboratory Measurement of Airborne Sound Insulation of Building Elements".

Insulated Trim-EPS-FR Acoustic Values

Frequency		50mm	125mm
	100		15.41
160		16.40	15.09
200		18.81	17.70
250		19.70	18.51
315		21.39	19.40
400		22.31	19.69
630		23.40	19.10
800		23.69	17.31
1000		25.61	18.29
1250		21.01	30.10
1600		20.00	36.19
2000		34.79	37.30
2500		41.70	37.09
3150		44.10	35.69
5000		44.61	39.90
STC		24.00	23.00
RW		25.00	24.00

The procedures specified by AS 1276-1979 and AS/NZS ISO 717.1:2004 were used to calculate the Sound Transmission Class (STC) and the Weighted Sound Reduction Index (Rw) of Insulated Trim-EPS-FR

Insulated Trim-EPS-FR is classed as traficable when used in a roof application.

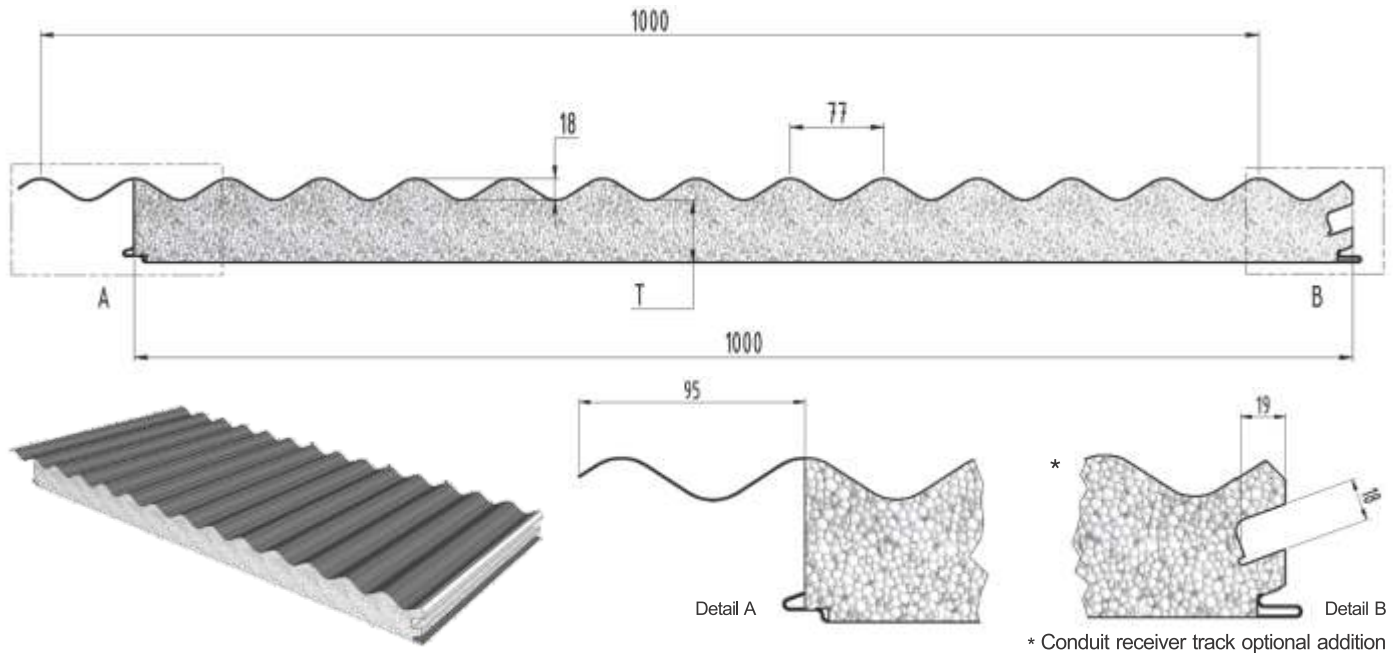
Insulated Tim-EPS-FR Fixing Details

Crest fixing only. One fixing every second crest

Panel Thickness (mm)	Fixing into Steel	Fixing into Timber
50	Tek 14 x 135 Hex Head Screw	T17 14 x 125 Hex Head Screw
75	Tek 14 x 150 Hex Head Screw	T17 14 x 150 Hex Head Screw
100	Tek 14 x 175 Hex Head Screw	T17 14 x 175 Hex Head Screw
125	Tek 14 x 200 Hex Head Screw	T17 14 x 200 Hex Head Screw
150	Tek 14 x 230 Hex Head Screw	T17 14 x 230 Hex Head Screw
175	Tek 14 x 260 Hex Head Screw	T17 14 x 265 Hex Head Screw
200	Tek 14 x 260 Hex Head Screw	T17 14 x 300 Hex Head Screw

Use Cyclone Plate and Neo Washer on each fixing.

Upon Installation the overlap needs to be stitch screwed or riveted every 300mm.



Insulated Corro-EPS-FR is an Insulated Roof Panel System, comprising of two pre-painted, roll-formed steel skins, with a fire retardant grade expanded polystyrene insulating core.

The top profile offers striking looks with all of the benefits of modern Insulated Panel technologies.

The bottom skin has a roll-formed tongue and groove edge.

Recommendations

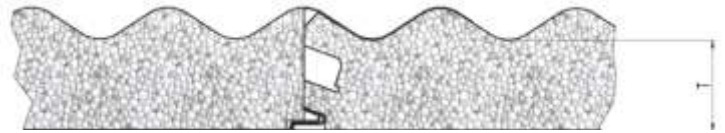
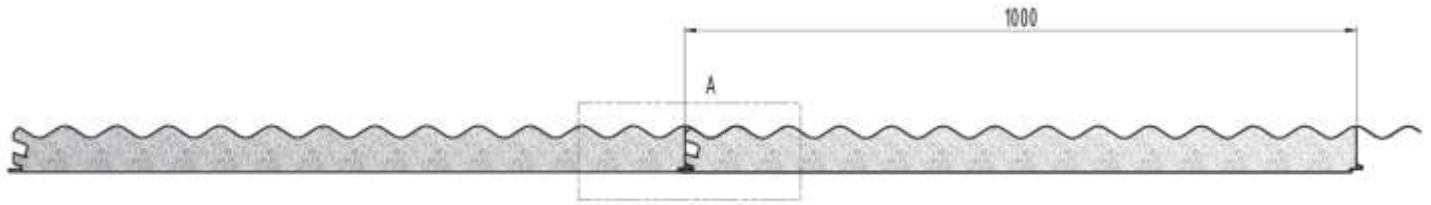
- Patios
- Pergolas
- Carports
- Portable Buildings
- Home Extensions
- Commercial Buildings
- Residential Buildings
- Wineries
- Spray Booths

Profiles Available (Underside Skin)

- Smooth
- Ribbed
- SatinLine
- Mesa

Single Spans (mm)					
Wind Category	Panel Thickness	3 Sides Open	2 Sides Open	1 Side Open	Fully Enclosed
N2 (W33)	50	5400	5000	4500	4300
	75	6500	5500	5000	4700
	100	7200	6200	5700	5500
N3 (W41)	50	4800	3800	3300	3000
	75	5500	4300	3900	3700
	100	6200	5000	4500	4300
N4 (W50)	50	4000	3300	3000	3000
	75	4600	3600	3400	3300
	100	5300	4100	3800	3500

Steel Skin Details	Top Skin	0.42mm / G550 AZ150
	Bottom Skin	0.60mm / G300 Z275
Max. Skin Temperature	78°C Dry Heat	
Core Material Details	SL Grade Polystyrene - Fire Retardant Grade	
Thermal Conductivity AS 1366.2/ASTM C 518	0.037 W/mK @22.5°C	
Adhesive	Thermosetting two-part adhesive	
Core Density	13.5kg/m ³	
Weight (kg/m²)	50mm Panel	10.58
	75mm panel	10.94
	100mm Panel	11.17
	125mm Panel	11.80
	150mm Panel	12.23
R Value @ 22.5°C	50mm Panel	1.4
	75mm panel	2.1
	100mm Panel	2.7
	125mm Panel	3.4
R Value @ 22.5°C	150mm Panel	4.1
	Sheet Coverage 1000mm	
	Length (mm) Cut to Length Min of 1800mm	
	Length Tolerance (mm) 5mm+/-	
Thickness (mm) 50, 75, 100, 125, 150		
Minimum Roof Pitch 3°		



Detail A

Early Fire Hazard Properties AS 1530-1999

AWTA Test Report 18-006076 14-11-2018

Index	Test Range	External Top Skin
Ignitability	0-20	0
Spread of Flame	0-10	0
Heat Evolved	0-10	0
Smoke Developed	0-10	2

Insulated Corro-EPS-FR Acoustic Testing has been performed in compliance with the requirements of AS 1191-2002 "Acoustics - Method for Laboratory Measurement of Airborne Sound Insulation of Building Elements".

The procedures specified by AS 1276-1979 and AS/NZS ISO 717.1:2004 were used to calculate the Sound Transmission Class (STC) and the Weighted Sound Reduction Index (Rw) of Insulated Corro-EPS-FR

Insulated Corro-EPS-FR is classed as trafficable when used in a roof application.

Insulated Corro-EPS-FR Acoustic Values

		50mm	125mm
Frequency	100	15.41	15.00
	160	16.40	15.09
	200	18.81	17.70
	250	19.70	18.51
	315	21.39	19.40
	400	22.31	19.69
	630	23.40	19.10
	800	23.69	17.31
	1000	25.61	18.29
	1250	21.01	30.10
	1600	20.00	36.19
	2000	34.79	37.30
	2500	41.70	37.09
	3150	44.10	35.69
	5000	44.61	39.90
	STC	24.00	23.00
	RW	25.00	24.00

Insulated Corro-EPS-FR Fixing Details

Crest fixing only. One fixing every second crest

Panel Thickness (mm)	Fixing into Steel	Fixing into Timber
50	Tek 14 x 115 Hex Head Screw	T17 14 x 125 Hex Head Screw
75	Tek 14 x 135 Hex Head Screw	T17 14 x 150 Hex Head Screw
100	Tek 14 x 150 Hex Head Screw	T17 14 x 175 Hex Head Screw
125	Tek 14 x 175 Hex Head Screw	T17 14 x 200 Hex Head Screw
150	Tek 14 x 200 Hex Head Screw	T17 14 x 230 Hex Head Screw

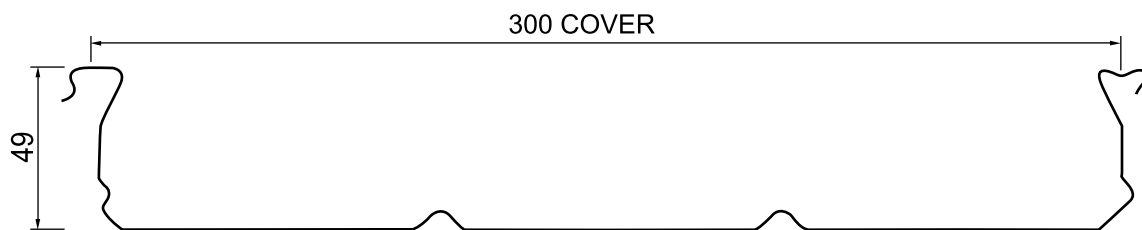
Use Cyclone Plate and Neo Washer on each fixing.

Upon Installation the overlap needs to be stitch screwed or riveted every 300mm.

Single skin allows you to create the perfect outdoor entertaining area that enhances your lifestyle, and adds value to your property.

- The new LED lighting system and Skylights are easily to install as components of the Single skin roofing system
- Cost effective and stylish patio system when combined with Beam
- Clip-together modules make Single Skin perfect as a DIY project
- 300mm wide roof modules allow for easy handling and fast installation
- Deep roofing profile creates strength and allows for greater spans
- Ceiling profile combines the elegance of VJ panelling with a clean, modern appearance
- Available in popular high-gloss colours to complement your house
- Written 20 Year Warranty for true peace of mind

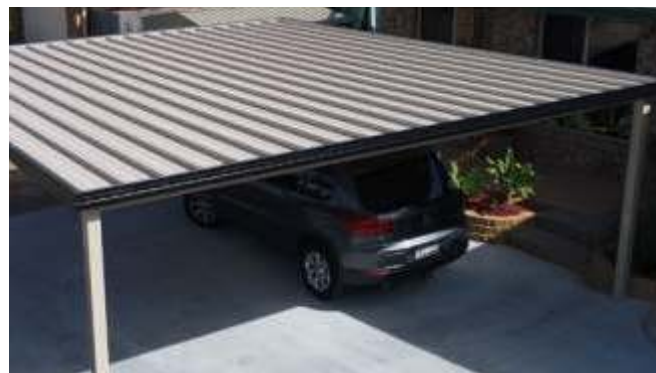
FIGURE - SHEETING PROFILE



Material:
 G550 0.48 BMT steel to AS 1397

Colour Range - Single Skin		
Roof Colour	Ceiling Colour	
Off White/Surfmist ®	Off White/Surfmist ®	● *
Smooth Cream Classic Cream™	Smooth Cream Classic Cream™	● *
Merino/Paperbark ®	Merino/Paperbark ®	● *
Slate Grey Woodland Grey ®	Offwhite/Surfmist	● *
Monolith/Monument ®	Offwhite/Surfmist	● *
Birch/Dune ®	Thredbo White	● *

* Note: Single colours are 80% gloss level on the ceiling, standard gloss level on the roof.



- Minimum roofing slope to be 1°.
- The minimum fixing requirements are 3/14g screws per sheet per support.
- Allowable deflection limit for wind loading is span / 50.
- Maintenance load of 0.5kN has been allowed for.
- Single Skin is classified as a non-trafficable roof.
- Maximum allowable overhang of sheeting is 30% of the adjacent span or 900mm, whichever is lesser.
- 'Roof Span' is the maximum spacing of supports for sheeting.
- Design wind class is to be determined in accordance with AS 4055:2002, Wind Loads for Housing.
- The structural adequacy to any existing structure to which the sheeting and/or beam is to attached, must be checked by an Engineer.
- Any side of new roofing with more than 50% clear area of ground to sheeting blocked, is considered to be an enclosed wall.

Allowable Span (mm) for 0.48 BMT Single in non-cyclonic regions

Wind Class	Single Span				Double Span			
	Cp,n				Cp,n			
	0.5	0.7	1	1.2	0.5	0.7	1	1.2
N1	5340	5130	4550	4280	6330	5820	4820	4370
N2	5240	4910	4060	3650	5850	4900	4050	3650
N3	4630	3850	3130	2820	4620	3850	3130	2820
N4	3720	3060	2500	2250	3710	3060	2490	2250
N5	2970	2460	2010	1830	2970	2450	2010	1830

Allowable Span (mm) for Beams - Roof panel span of 6.5m with 1m overhang

Roof Type	One side attached		Two sides attached	
Wind Class	N2	N3	N4	N5
150x1.2 Beam	4770	3640	3850	2920
200x1.2 Beam	5500	4110	4370	3220
250x1.6 Beam	7960	6500	6780	5270
300x1.6 Beam	8630	7000	7380	5490

LIMITS FOR USING TYPE 1P AWNING CLASSIFICATION

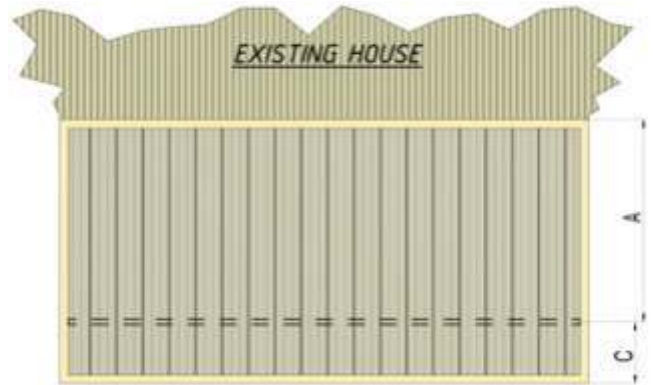
Following are the dimensional requirements for using Type 1P awning classification, which has 1 partial wall.

- For awning dimensions, refer to figure 1.
- Awning is to be attached one side only to an existing building.
- Awning pitch "α" is to be between 1° and 10°.
- Slope of the awning is to be normal to the attached wall.
- Minimum hc = 0.05 x d
- Maximum hc = 1.0 x d
- Maximum hc/wc to be as per Table 1.
- Maximum blockage under the roof parallel to the attached wall is to be 56% of the projected area.
- Awnings attached one side that do not comply with the above are to be classified as Type 1.



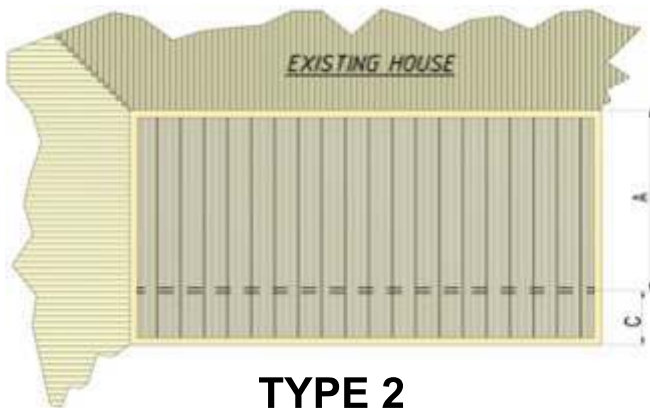
TYPE 0

Free-Standing
 (Cp,n 0.5/0.7)



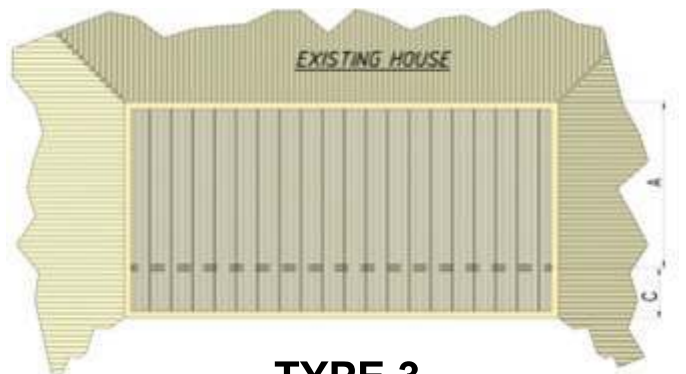
TYPE 1/1P

One Side Attached
 (Cp,n 0.7/0.5)



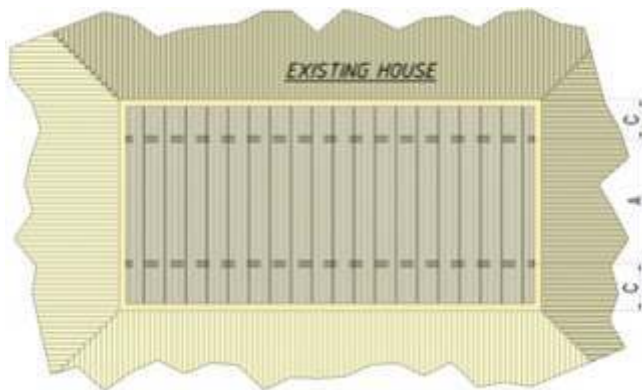
TYPE 2

Two Side Attached
 (Cp,n 1)



TYPE 3

Three Side Attached
 (Cp,n 1.2)



TYPE 4

All Sides Attached
 (Cp,n 1)

Table 1 - Dimensional limits for Cp,n=0.5

hc/h	Max. hc/wc
<0.4	Not Allowed
0.4 to 0.5	No limits
0.5 to 0.75	1.0
0.75 to 0.8	0.71
0.8 to 0.9	0.45
0.9 to 1.0	0.33

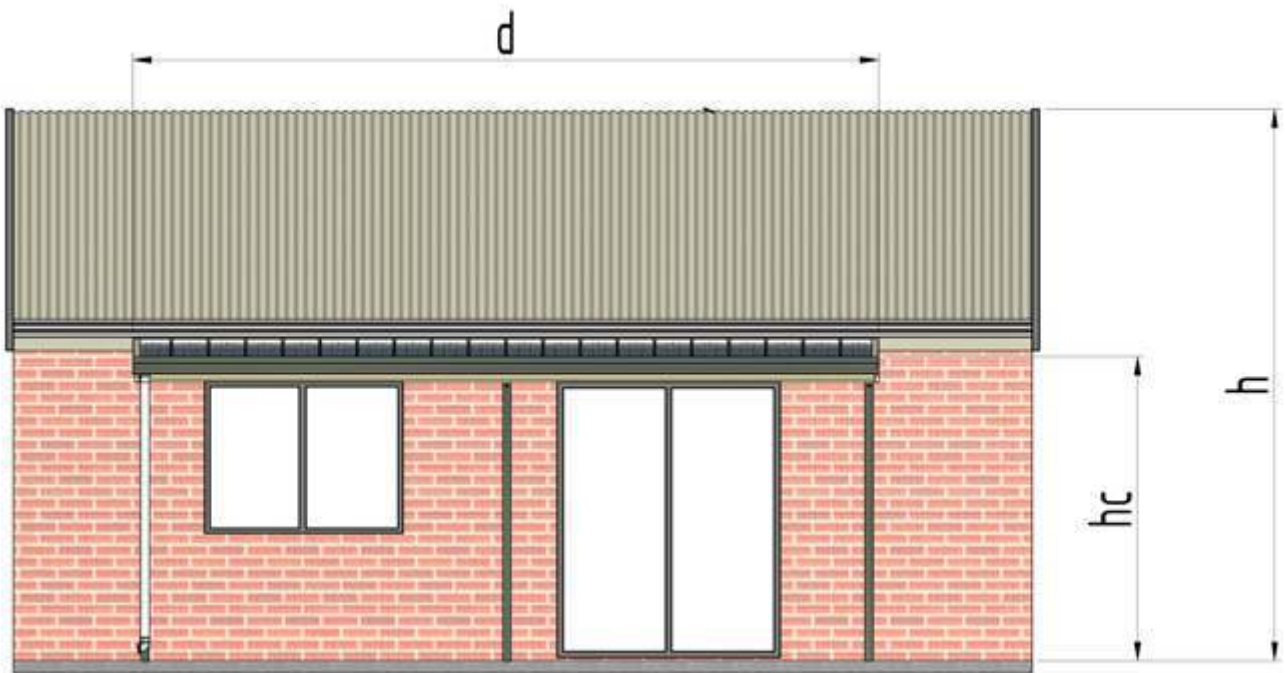
- "A" = Single Span

- "C" = Single Overhang

FIGURE 1 - ROOF DIMENSION

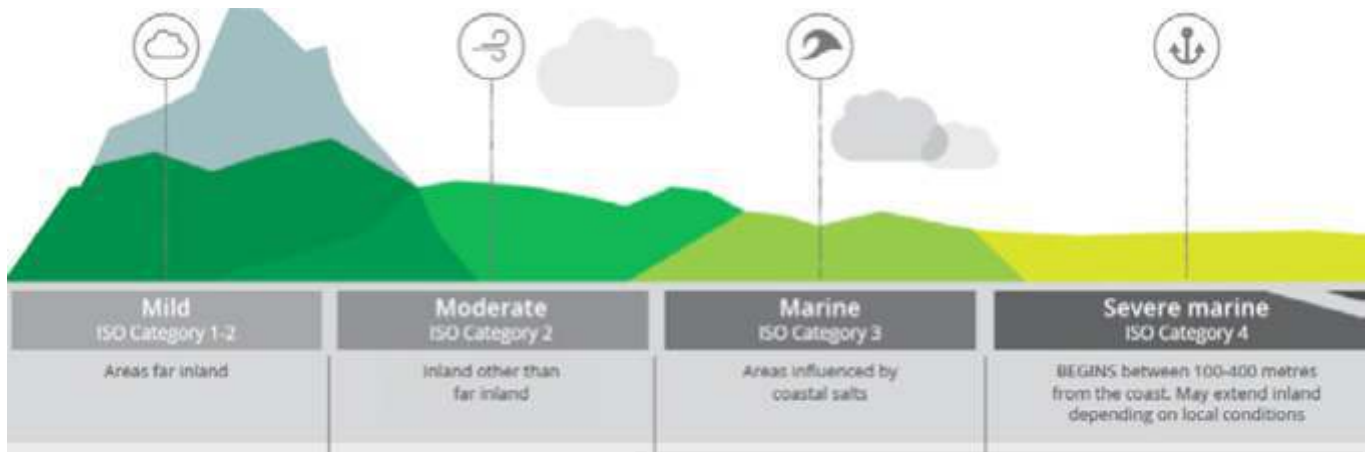


FRONT VIEW



SIDE VIEW

Steel Skin Details	0.48mm / G550 AZ150
Sheet Coverage	300mm
Length (mm)	Cut to length. Min. of 1500mm
Minimum Roof Pitch	1°



Max is a steel substrate that provides greater corrosion resistance and a longer working life in demanding environmental conditions.



PRODUCT RANGE

- Max Roof panels are available in - Insulated Trim, Insulated Corro, EPS-FR and PIR cores.
- Max Wall Panels available in - Cool with EPS-FR and PIR
- Max Beams are available in 200mm x 65mm only.
- Max Receiver Channels are available
- SurfMist only, with other colours on request.
- Site specific warranties are available on request.

Max Specifications		
Steel Skin Details	Top Skin	Bottom Skin
Insulated Trim	0.42mm / G550 ZM240	0.60mm / G300 ZM240
Insulated Corro	0.42mm / G550 ZM240	0.60mm / G300 ZM240
Insulated Cool	0.60mm / G550 ZM240	0.60mm / G300 ZM240
Beam	1.2mm / G550 ZM240	
Receiver Channel	1.2mm / G550 ZM240	

Recommendations

- Patios, Pergolas and Carports near coastal conditions or canals
- Commercial buildings near coastal conditions
- Portable Buildings
- Spray Booths
- Wineries
- Industrial buildings near corrosive elements

ROOFING ACCESSORIES

FLASHING AND RAINWATER GOODS

We offer a wide range of flashings and rainwater accessories, ready for your next project.

Please refer to our Flashings - Recommended Installations Manual to see the extensive range of standard flashings we provide. We can also supply one-off designs to suit any application.

A range of gutter profiles are also available, with a selection of downpipes to suit.

All flashings and gutters are available in Max.

Flashings unless otherwise noted are made from 0.55mm steel.



ROOFING ACCESSORIES

We offer a one-stop-shop for the complete range of roofing accessories, including foam infill strips, butyl rubber adhesive tape and sealants.



FASTENERS

Please refer to the screw selection table in the Handling and Installation Manual to select the correct fastener for the panel type and thickness. For any projects that must comply with Factory Mutual certifications, please refer to the Factory Mutual Approvals web page which lists the approved fastener system specific to each panel type.

Screw Types

Main Fasteners

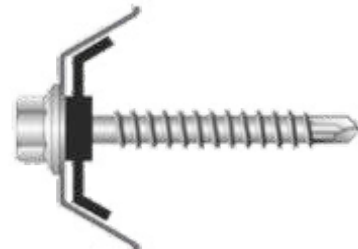
Metal Tek - Fixing | **Fixing into Steel Beams up to 12.5mm**



T17 - Fixing | **Fixing into Timber Beams**



Cyclone Plate and Washer



Secondary Fasteners

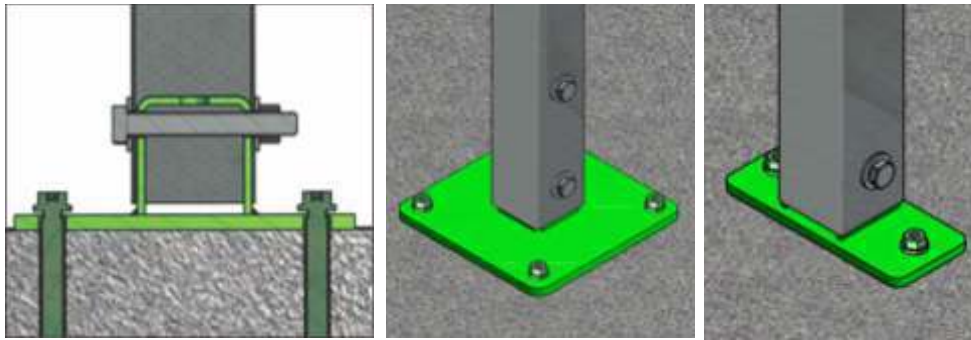
Tek M13 x 25mm - Fixing | **Stitching Screw**



POST

A range of posts, with all required fixings are available for your next project. Choose from our standard colour range, or powder-coat your own to meet your requirements.

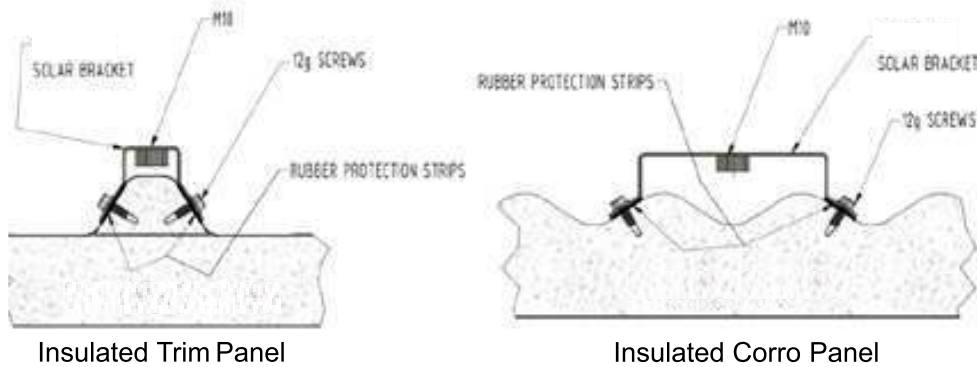
The fixing methods required at both the ground level and at the beam are subject to the design requirements outlined in our series of Engineering Manuals. All brackets and fixings assemblies are available us.



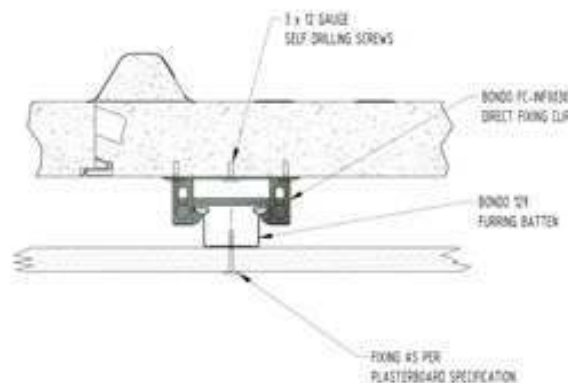
BRACKETS

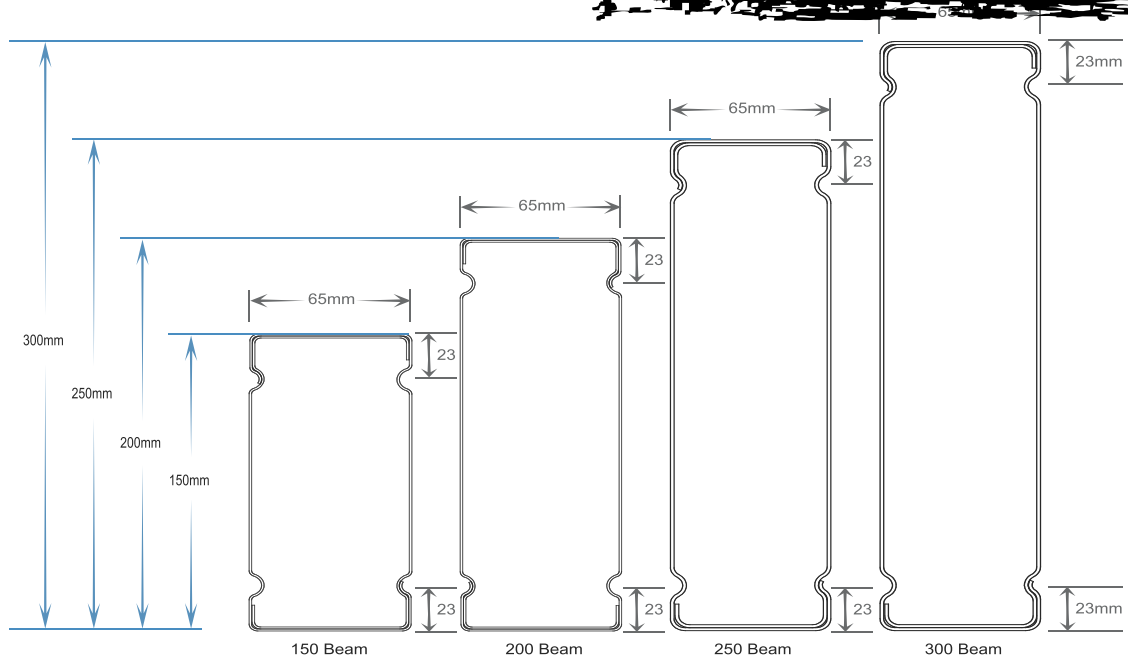
We have a range of service brackets designed to easily allow for the addition of Solar Panels, Fans, Plasterboard Linings etc.

SOLAR PANEL BRACKET FIXING DETAILS



PLASTERBOARD BRACKETS





PRODUCT DETAILS

Beams are available in 5 sizes allowing for maximum design flexibility. They are engineered and tested to comply with Australian Standard AS 1397/G550. All beams are manufactured from strong high tensile steel in a range of contemporary colours allowing for long unsupported spans.

BEAM SPECIFICATIONS

Manufactured from high tensile steel, Beam is engineered and tested to comply with Australian Standard AS 1397. Major components are made from strong high tensile steel, while the fixings and brackets are galvanised for a long, useable life.

BEAM SPECIFICATIONS					
	100	150	200	250	300
Base Metal Thickness	1.0mm	1.2mm	1.2mm	1.6mm	1.6mm
Yield Strength	550MPa	550MPa	550MPa	550MPa	550MPa
Mass	4.1kg/m	5.7kg/m	7.8kg/m	10.4kg/m	11.7kg/m

PRODUCT FEATURES

- Wide range of colour finishes available
- 5 different sizes available
- Xtreme Beam now available in 250mm and 300mm for extra long unsupported spans
- Two-piece construction giving extra strength and spanning
- Cut to length
- Has a wide range of colour-matched accessories for quick and easy onsite assembly
- 150mm & 200mm SurfMist Beam is now available in Max, with site specific warranties up to 25 years.

COLOUR AVAILABILITY

	150	200	250	300
SurfMist	•	•	•	•
* SurfMist Max	•		•	
Smooth Cream	•	•		
Merino	•	•		
NightSky	•	•		

PATIO & ROOFING RANGE



TIMBER POST AND BEAMS

PRODUCT DETAILS

Our Panels have a range of laminated hardwood post & beams that are specifically designed to suit our Insulated Trim and Insulated Corro range of insulated roofing panels.

PRODUCT FEATURES

- High quality timber products created by end-jointing small pieces of Merbau/Kwila
- Available in lengths up to 8 metres, with predictable strength
- Thicknesses available in 35mm, 42mm, 65mm & 80mm
- Beam Depths available in 70mm, 90mm, 115mm, 140mm, 165mm, 190mm, 240mm & 290mm
- Engineered for wind zones up to N3 and C2
- Can be used in externally exposed environments
- Termite resistant

TIMBER SPECIFICATIONS

- Timber: Merbau/Kwila Intsia bijuga
- Moisture: 12-16%
- Strength: GL17
- Adhesive: Phenol Resorcinol Formaldehyde
- Service Class: Suitable for Class 3 environments
- Appearance grade: A
- Durability: Class1. Life expectancy 40 years+

VERANDAH POSTS SHEET ROOF N3/C2

ROOF & CEILING - ROOF LOAD AREA UP TO 3.0M²

Size (mm)	Floor Area Supported (m ²)						
	0.0	1.0	2.0	3.0	4.0	6.0	8.0
90x90	5.0	5.0	4.0	3.3	2.9	2.4	2.0
100x100	5.0	5.0	4.8	4.1	3.6	2.9	2.5
115x115	5.0	5.0	5.0	5.0	4.7	3.9	3.4
140x140	5.0	5.0	5.0	5.0	5.0	5.0	5.0

ROOF & CEILING - ROOF LOAD AREA UP TO 6.0M²

Size (mm)	Floor Area Supported (m ²)						
	0.0	1.0	2.0	3.0	4.0	6.0	8.0
90x90	5.0	4.9	3.9	3.2	2.8	2.3	2.0
100x100	5.0	5.0	4.8	4.0	3.5	2.9	2.5
115x115	5.0	5.0	5.0	5.0	4.7	3.9	3.4
140x140	5.0	5.0	5.0	5.0	5.0	5.0	5.0

ROOF & CEILING - ROOF LOAD AREA UP TO 9.0M²

Size (mm)	Floor Area Supported (m ²)						
	0.0	1.0	2.0	3.0	4.0	6.0	8.0
90x90	5.0	4.3	3.8	3.2	2.8	2.3	2.0
100x100	5.0	5.0	4.6	3.9	3.5	2.9	2.5
115x115	5.0	5.0	5.0	5.0	4.6	3.8	3.3
140x140	5.0	5.0	5.0	5.0	5.0	5.0	5.0

VERANDAH BEAMS - LIGHT SHEET ROOFING N1/2

Supporting Light Sheet Roofing Only						
Size (mm)	Single Span - Roof Load Width (m)					
	0.6	1.2	1.8	2.4	3.0	3.6
90x42	2.7	2.7	2.6	2.3	2.1	1.9
115x42	3.6	3.6	3.3	2.9	2.7	2.5
140x42	4.4	4.4	4.0	3.6	3.3	3.0
165x41	5.1	5.0	4.5	4.1	3.8	3.5
190x42	5.9	5.5	5.0	4.6	4.3	4.0
240x42	7.3	6.4	5.9	5.4	5.1	4.8
265x42	7.7	6.9	6.3	5.8	5.5	5.2
290x42	8.2	7.3	6.7	6.2	5.8	5.5
140x65	5.0	4.8	4.4	4.0	3.7	3.4
190x65	6.6	5.9	5.4	5.0	4.7	4.5
240x65	7.6	6.9	6.4	5.9	5.6	5.3
290x65	8.5	7.8	7.2	6.8	6.4	6.1
140x80	5.4	5.0	4.6	4.2	4.0	3.7
190x80	6.8	6.1	5.6	5.2	4.9	4.7
240x80	7.8	7.1	6.6	6.2	5.8	5.5
290x80	8.7	8.0	7.5	7.0	6.6	6.3

VERANDAH BEAMS - LIGHT SHEET ROOFING C1/2

Supporting Light Sheet Roofing Only							
Size (mm)	Single Span - Roof Load Width (m)						
	0.6	1.2	1.8	2.4	3.6	4.8	6.0
90x42	2.7	2.3	1.9	1.6	1.3	1.2	1.0
115x42	3.6	2.9	2.4	2.1	1.7	1.5	1.3
140x42	4.4	3.6	3.0	2.6	2.1	1.8	1.6
165x41	5.1	4.2	3.5	3.1	2.5	2.2	1.9
190x42	5.9	4.9	4.1	3.5	2.9	2.5	2.2
240x42	7.3	6.0	4.9	4.2	3.5	3.0	2.7
265x42	7.7	6.4	5.2	4.5	3.7	3.2	2.9
290x42	8.2	6.7	5.5	4.7	3.9	3.4	3.0
140x65	5.0	4.1	3.6	3.2	2.6	2.3	2.0
190x65	6.6	5.6	4.9	4.4	3.6	3.1	2.8
240x65	7.6	6.9	6.2	5.6	4.6	4.0	3.5
290x65	8.5	7.8	7.2	6.8	5.5	4.8	4.3
140x80	5.4	4.4	3.9	3.5	2.9	2.5	2.3
190x80	6.8	6.1	5.3	4.8	4.0	3.5	3.1
240x80	7.8	7.1	6.6	6.1	5.1	4.4	3.9
290x80	8.7	8.0	7.5	7.0	6.1	5.3	4.8

Supporting Light Sheet Roofing Only

Size (mm)	Continuous Span - Roof Load Width (m)					
	0.6	1.2	1.8	2.4	3.0	3.6
90x42	3.1	3.1	3.0	2.6	2.4	2.2
115x42	4.0	4.0	3.9	3.4	3.0	2.8
140x42	4.9	4.9	4.8	4.1	3.7	3.4
165x41	5.8	5.8	5.7	4.9	4.4	4.0
190x42	6.6	6.6	6.3	5.7	5.1	4.7
240x42	8.4	8.1	7.4	6.8	6.2	5.7
265x42	9.3	8.7	7.9	7.3	6.8	6.2
290x42	10.1	9.2	8.4	7.8	7.3	6.7
140x65	5.6	5.6	5.5	5.1	4.7	4.3
190x65	7.7	7.5	6.8	6.3	5.9	5.6
240x65	9.6	8.7	8.8	7.5	7.0	6.7
290x65	10.7	9.8	9.1	8.5	8.0	7.6
140x80	6.1	6.1	5.7	5.3	5.0	4.7
190x80	8.2	7.7	7.1	6.6	6.2	5.9
240x80	9.8	8.9	8.3	7.8	7.3	7.0
290x80	10.9	10.1	9.4	8.8	8.4	8.0

Supporting Light Sheet Roofing Only

Size (mm)	Continuous Span - Roof Load Width (m)						
	0.6	1.2	1.8	2.4	3.6	4.8	6.0
90x42	3.1	2.3	1.9	1.6	1.3	1.2	1.0
115x42	4.0	3.0	2.4	2.1	1.7	1.5	1.3
140x42	4.9	3.7	3.0	2.6	2.1	1.8	1.6
165x41	5.8	4.3	3.5	3.1	2.5	2.2	1.9
190x42	6.6	5.0	4.1	3.5	2.9	2.5	2.2
240x42	8.4	6.1	5.0	4.3	3.5	3.1	2.8
265x42	9.3	6.7	5.4	4.7	3.8	3.3	3.0
290x42	10.1	7.2	5.9	5.1	4.2	3.6	3.2
140x65	5.6	4.6	3.7	3.2	2.6	2.3	2.0
190x65	7.7	6.3	5.1	4.4	3.6	3.1	2.8
240x65	9.6	8.0	6.5	5.6	4.6	4.0	3.5
290x65	10.7	9.7	7.8	6.8	5.5	4.8	4.3
140x80	6.1	5.1	4.2	3.6	2.9	2.5	2.3
190x80	8.2	7.0	5.7	4.9	4.0	3.5	3.1
240x80	9.8	8.9	7.2	6.2	5.1	4.4	3.9
290x80	10.9	10.1	8.7	7.5	6.1	5.3	4.8

PHOTOVOLTAIC (PV) SOLAR PANELS

PRODUCT DETAILS

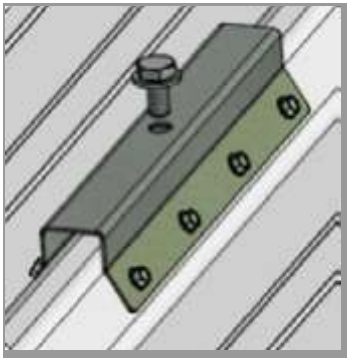
To accommodate the trend in roof mounted PV Solar Panels, Panels have designed an engineering certified fixing bracket that is specifically suited for our Insulated Trim and insulated Corro range of insulated roofing panels.

PRODUCT FEATURES

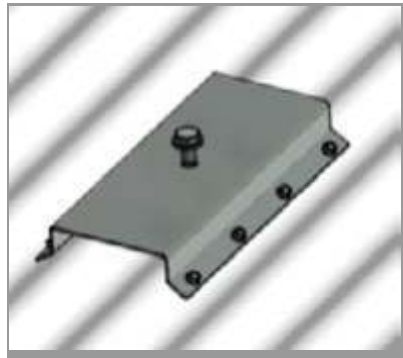
- Fully Engineered using 1.5mm hi-tensile steel
- Fixing brackets available to suit Insulated T rim and Insulated Corro
- Engineered to cover wind zones N1- N5 and C1 - C5
- Suitable for retro-fitting to existing insulated roofs
- Brackets manufactured from stainless steel offering durable weathering in all environments



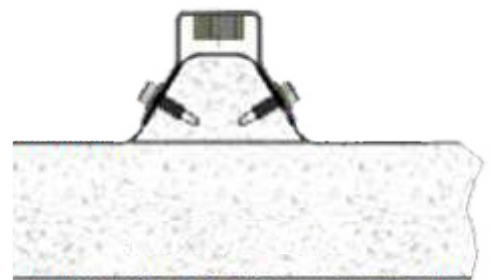
BRACKET SPECIFICATIONS



Bracket Details - Insulated Trim



Bracket Details - Insulated Corro

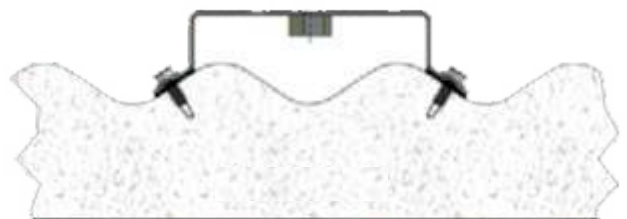


Bracket Fixing Details - Insulated Trim Panel

PV SOLAR PANEL INSTALLATION PITCH ANGLE



Mounting Angle $\geq 40^\circ$



Bracket Fixing Details - Insulated Corro Panel



P/V SOLAR PANEL FIXING REQUIREMENT TABLES

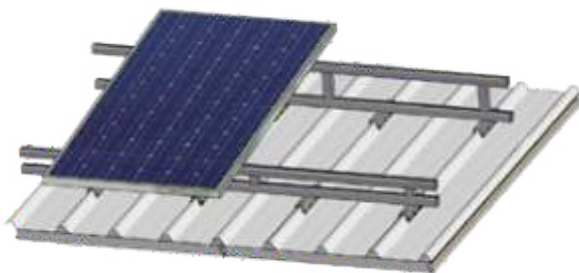
- The fixing tables are specially engineered for PV solar panels of a maximum dimension of 1600mm x 900mm.
- Rails must have the load weight of the PV solar cell distributed across numerous brackets.

Portrait Solar Panel Fixing Requirements

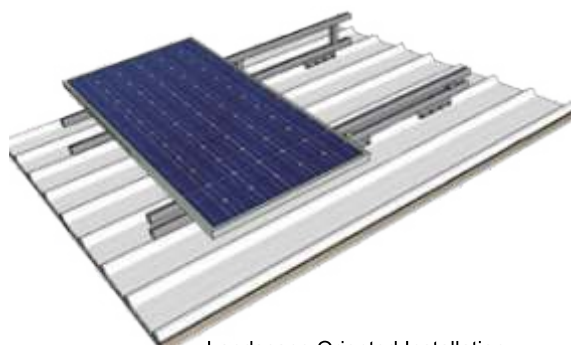
All brackets to be screwed with 12g class 4 screws with seal.

Wind Class	Limit State Design Pressure (kPa)	Brackets / Panel @ 250mm crs	Screws / Brackets @ 250mm crs	Brackets / Panel @ 500mm crs	Screws / Brackets @ 500mm crs
N2	2.16	6	4	4	4
N3	3.32	6	4	4	4
N4	4.97	6	4	4	4
N5	7.14	6	6	4	8
C1	3.79	6	4	4	4
C2	5.64	6	6	4	8
C3	8.11	6	6	4	10
C4	11.04	6	10	N/A	N/A

PV Solar Panel Positioning



Portrait Oriented Installation



Landscape Oriented Installation

Landscape Solar Panel Fixing Requirements

All brackets to be screwed with 12g class 4 screws with seal.

Wind Class	Limit State Design Pressure (kPa)	Brackets / Panel @ 250mm crs	Screws / Brackets @ 250mm crs	Brackets / Panel @ 500mm crs	Screws / Brackets @ 500mm crs
N2	2.16	10	4	6	4
N3	3.32	10	4	6	4
N4	4.97	10	4	6	4
N5	7.14	10	4	6	4
C1	3.79	10	4	6	4
C2	5.64	10	4	6	4
C3	8.11	10	4	6	4
C4	11.04	10	4	6	6



Skylights

The installation of Skylights is always an excellent way to provide natural daylight to any enclosure.

Our panels produce a range of PVC skylights to suit all of their roofing products.

When combined with the LED lighting, the patented combination skylight systems allow for natural light in the daylight and controlled lighting in the evenings.

PVC skylight systems are thermally efficient and their light weight offers ease of installation. Any concerns regarding overhead impact from being in an uncovered area is eliminated as the PVC material is durable and robust.

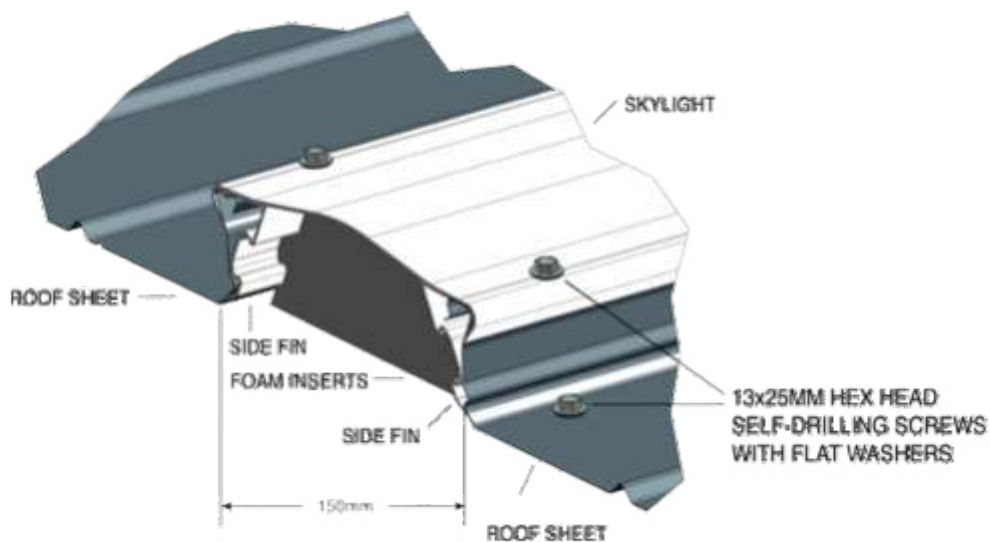
Combining the benefits of PVC skylighting with the patented integrated lighting system makes the skylight range the logical choice to enhance the all-round functionality of any deck or patio setting.

- Available in 4 different configurations to suit Insulated Trim, Insulated Corro, Cool & Single
- Conforms to the Australian Standards, AS 1562.3-2006 & AS 4256.5-2006
- Covered by Australian Innovative Patent Application No. 20181010435
- Remote and wall mounted controllers
- Low Voltage LED driver
- Written 3 Year Warranty
- A range of light colours available
- Dimable
- SAA approved electrical components
- No loose hanging wires and unsightly brackets

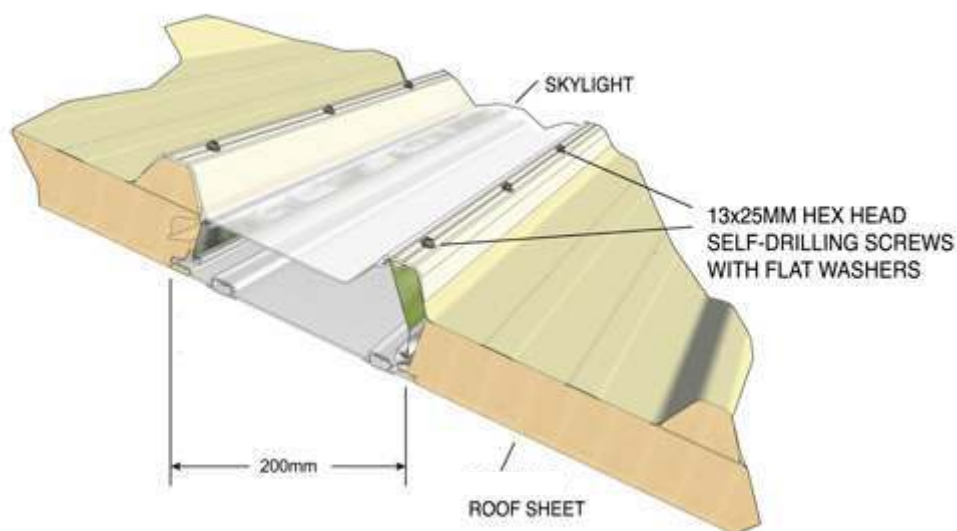
SKYLIGHT OPTIONS

Skylight lighting incorporates a translucent PVC extruded skylight when combined with a unique patent protected inbuilt LED lighting system, allows the patio and adjoining rooms to be bright both during the day and into the evening.

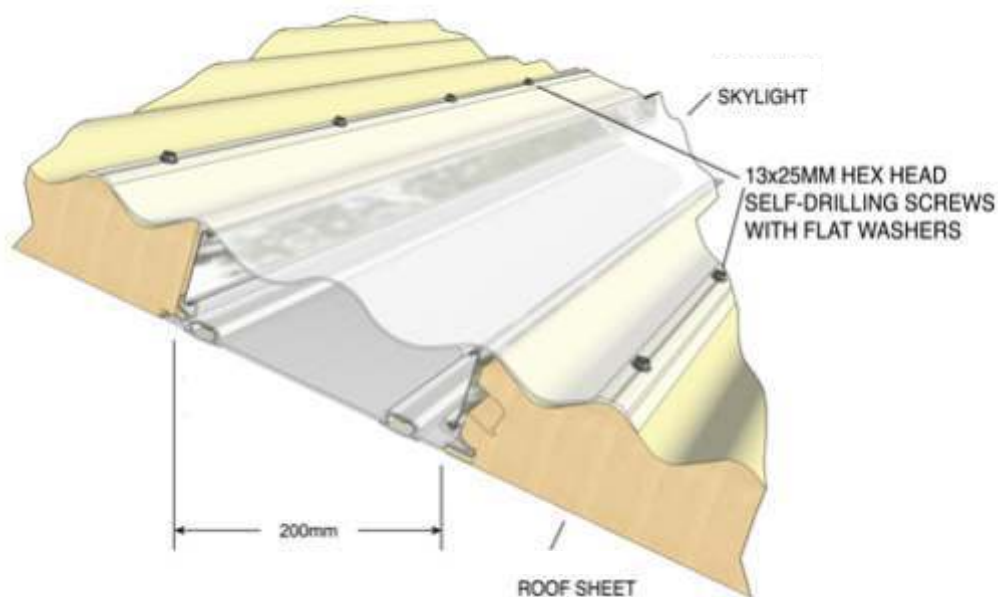
Single Skin



Insulated Trim



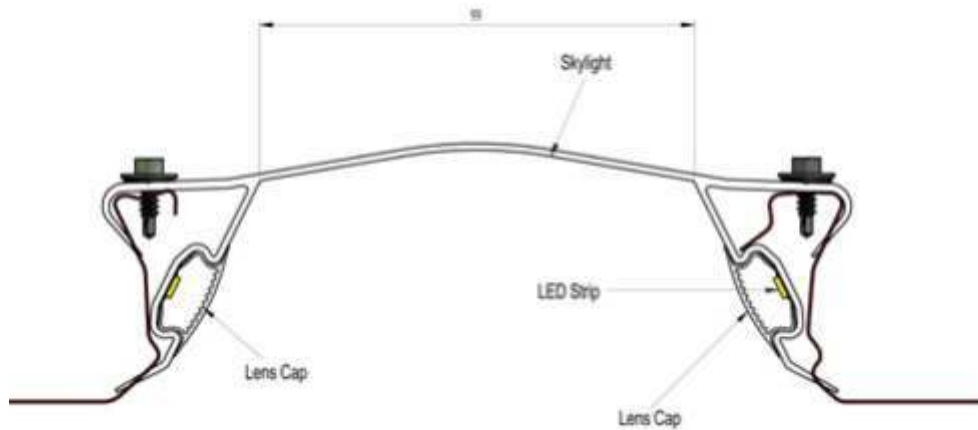
Insulated Corro



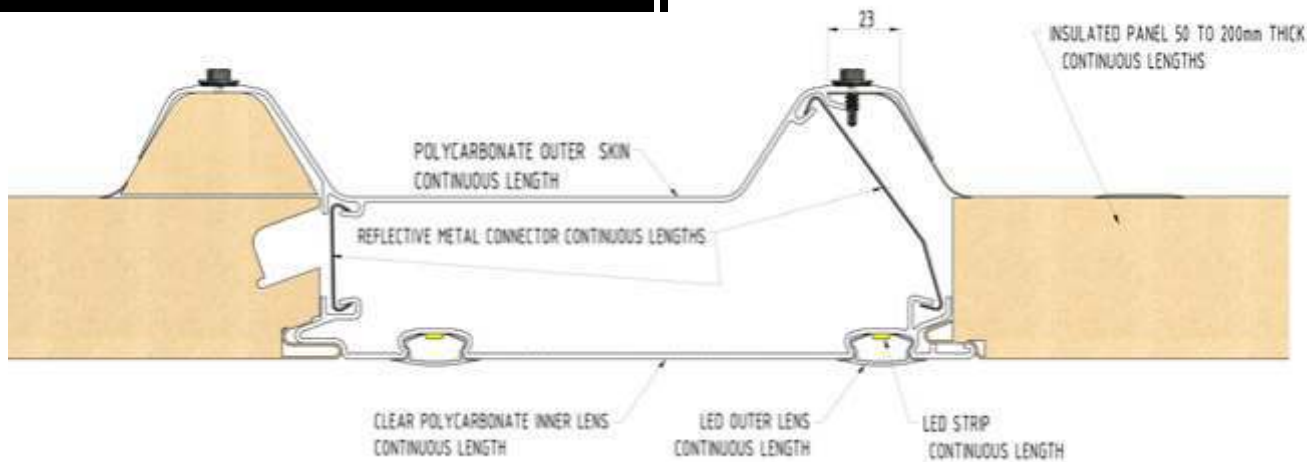
PRODUCT DETAILS

by the Australian Innovation Patent Application No. 20181010435. The uniquely innovated design allows for natural daylight to illuminate the patio area, while at night time the system operates as a fully functioning lighting system.

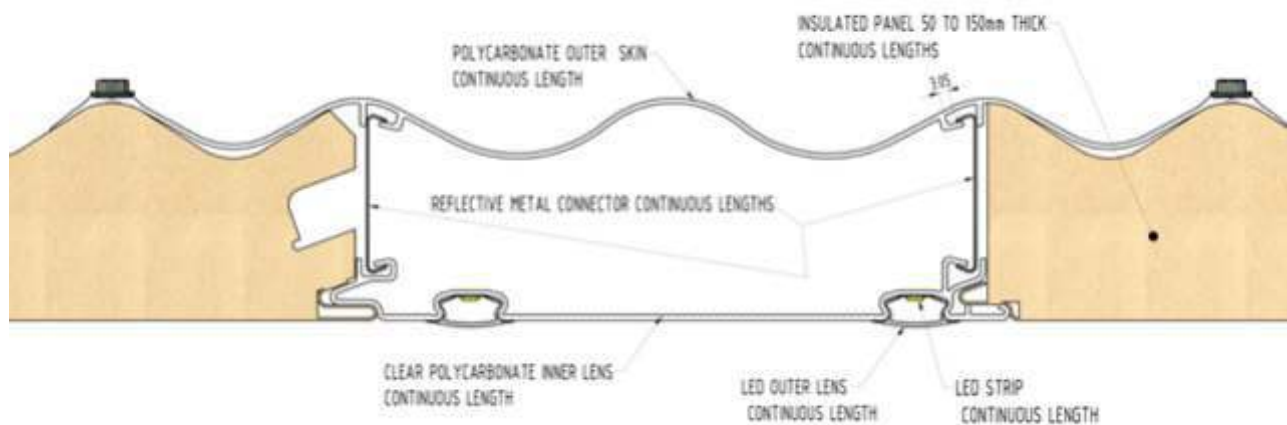
SINGLE - SKYLIGHT ASSEMBLIES



INSULATED TRIM - SKYLIGHT ASSEMBLIES



INSULATED CORRO - SKYLIGHT ASSEMBLIES





PRODUCT DETAIL

The LowProfile lights are available in 2 sizes, to allow for maximum design flexibility. The wafer-thin profile measures just 20mm thus creating a minimal recess when mounted into a laminated panel.

Product Features

- Available in 2 sizes 120mm & 170mm
- Aluminum & Acrylic Construction
- Durable Powder Coated exterior trim
- Round feature with integral edge-lit LED strip
- Steel spring clip for easy installation
- Polycarbonate Lens provides even illumination
- Strong thread-lock connectors for various cable length combinations.
- Low Voltage Power source
- Dimmable

LOWPROFILE SPECIFICATIONS

Manufactured from aluminum and acrylic, and finished with a durable powder coated trim the LowProfile lights are designed for a long, useable lifespan.

LOWPROFILE LIGHT SPECIFICATIONS

	DLP120	DLP170
Ceiling Cut Out	100mm	150mm
Exterior Diameter	120mm	170mm
Aperture Diameter	83mm	133mm
Height	20mm	20mm
Input Voltage	AC220-240V - Dimmable	AC220-240V - Dimmable
Light Output (Lumens)	50-70 lm/w	50-70 lm/w
Colour Accuracy (CRI)	71 CR(Ra)	71 CR(Ra)
Correlation Colour Temperature (CCT)	6500-7000K	6500-7000K
Protection Class	IP44	IP44
Warranty	3 year limited warranty	3 year limited warranty

LOWPROFILE VOLTAGE DRIVER SPECIFICATIONS

	DLDR12 - Trimac Dimmer	
Input Voltage	200-240 VAC, 47-63Hz	
Output Voltage	DLP120	18-25 VDC, 300mA +/-10mA
	DLP170	30-45 VDC, 300mA +/-10mA
Finish	Aluminium Weatherproof Case	
Dimmable Range	Down to 10%	
Warranty	3 year limited warranty	

PRODUCT DIMENSIONS



DLP120



DLP170

PRODUCT COMPONENTS

DLP120 Light set consists of:-

- 2 x LowProfile Recess Light
- 2 x 6 meter lead
- 2 x 3 meter extension lead
- 2 x Trimac dimmable drivers, with 1 metre power connection lead

DLP170 Light set consists of:-

- 1 x LowProfile Recess Light
- 1 x 6 meter lead
- 1 x 3 meter extension lead
- 1 x Trimac dimmable drivers, with 1 metre power connection lead







COLOUR	PRODUCT							
	Insulated Trim Top	Insulated Trim Bottom	Insulated Corro Top	Insulated Corro Bottom	Max Top	Max Bottom	Single Skin	Beam
Off White / Surfmist ®	●	●	●	●	●	●	●*	●*
Hamptons White ®	●	●	●	●				
Ash Wood ® / LUX		●		●				
Maple / LUX		●		●				
Smooth Cream Classic Cream™	●	●	●	●			●*	●*
Gull Grey / Shale Grey™	●		●					
Merino / Paperbark ®	●		●				●*	●*
Basalt ®	●		●					
Birch / Dune ®	●		●		●		●***	
Mist Green Pale Eucalypt™	●		●					
Armour Grey Windspray ®	●		●					
Jasmin Brown / Jasper ®	●		●					
Slate Grey Woodland Grey ®	●		●				●**	
Iron Grey / Ironstone ®	●		●					
Heritage Red Manor Red ®	●		●					
Caufield Green Cottage Green ®	●		●					
Monolith / Monument ®	●		●				●**	
Mountain Blue Deep Ocean ®	●		●					
Zinc	●		●					●*
Wallaby/Wallaroo ®	●		●					
Night Sky / Ebony™								●*

* **Single Skin** colours are 80% gloss level on the ceiling, standard gloss level on the roof. **Beam** is manufactured in 80% gloss colours.

** Underneath colour is Off White/Surfmist

*** Underneath colour is Hamptons White

® Colour names are registered trademarks of Bluescope Steel Limited. ™ Colour names are trademarks of Bluescope Steel Limited.

We've got you covered



AUSSIE ROOFING WAREHOUSE



ALL YOUR HOME IMPROVEMENT REQUIREMENTS

CALL 0426 968 086 FOR A FREE QUOTE

aussieroofing@yahoo.com

www.aussieroofingwarehouse.com.au